



Real-Time Severe Weather Information for Aviation - Civil Protection - Transport & Mobility – Mass Events – Outdoor Activities



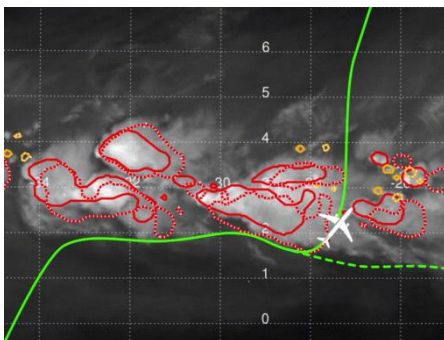
Based on state-of-the-art technology from the **German Aerospace Centre DLR** we offer products from expert systems that fuse satellite, weather radar, lightning and model data in order to detect, nowcast and forecast weather hazards in near real time. The weather information is tailored to user requirements, self-explanatory and easy to implement in existing displays.

Products

- **Cb-global:** Global thunderstorm detection and nowcasting based on satellite, lightning and model data
- **Rad-TRAM:** Tracking and nowcasting of heavy precipitation based on weather radar data
- **Cb-NowFor6:** Seamless thunderstorm now- and forecasting up to 6 hours ahead
- **Sat-Image:** Satellite images from all weather satellites

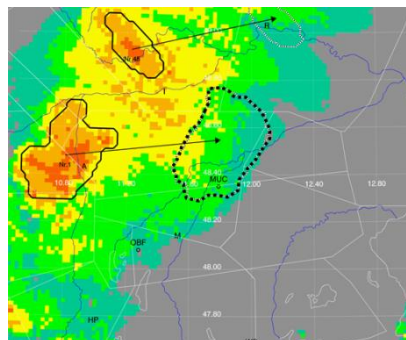
In addition we provide on demand user specific information on **local weather hazards** based on intelligent data fusion from multiple sources.

Situational Awareness



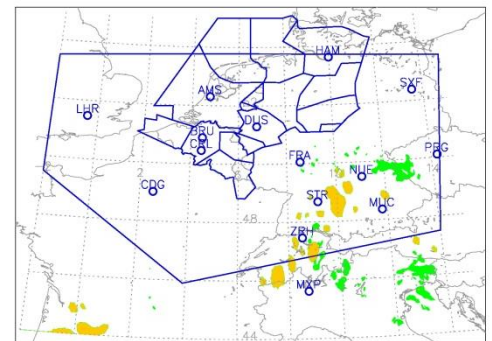
Detection

Short Term Decision Making



Nowcast

Strategic Planning



Forecast

Your Benefits:

- Optimization of operational procedures
- Optimization of precautionary measures
- Common Information Sharing (CIS)
- Avoidance of damage and injuries
- Mitigation of weather related costs



WxFUSION PRODUCTS
ON TIME – PRECISE - CONSISTENT

info@wxfusion.com
www.wxfusion.com