

... weather matters !

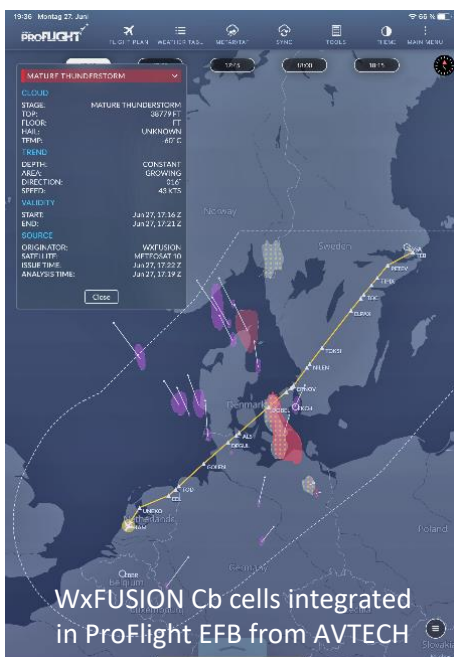
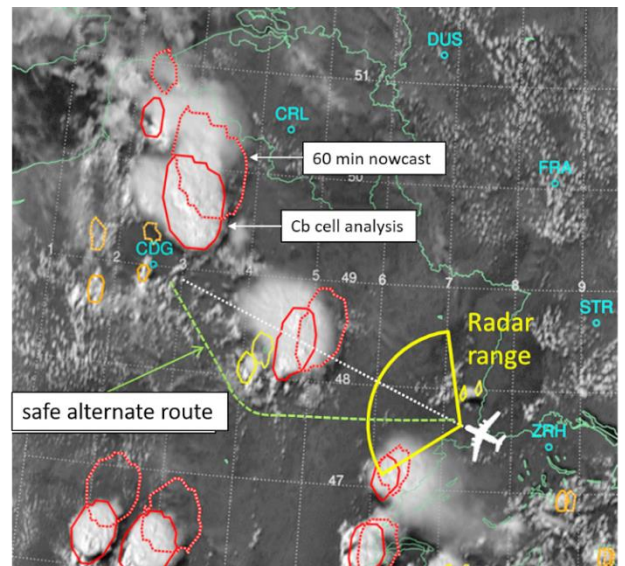
Cb-global



REAL-TIME THUNDERSTORM HAZARD INFORMATION FOR TURBULENCE AVOIDANCE AND OPTIMIZED ROUTING

Thunderstorms are the most hazardous weather features for aviation. Not only they lead to delays due to avoidance manoeuvres or blocked airspace, but also they can cause a/c damages, injuries and fatalities due to turbulence, icing or hail encounters – resulting in high costs which could be avoided by better situational awareness of these storms: their appearance, evolution and propagation.

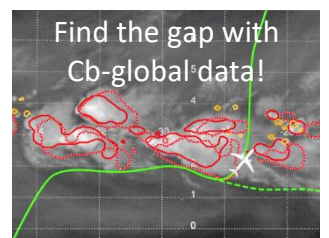
WxFUSION's product **Cb-global** fuses multiple channel data from satellite, lightning observations and model forecasts in order to detect and nowcast thunderstorms **globally** in near real time. The information of **individual thunderstorm cells** is tailored to user requirements, self-explanatory and easy to implement in existing displays, like the EFB below.



Cb-global provides the “big picture” of the thunderstorm situation in contrast to the limited view of the onboard radar

Your benefits of using Cb-global data:

- Get the full overview of Cb cells impacting your route enabling situational awareness
- Know the top height and propagation of Cb cells for the next hour
- Change your route strategically and timely in order to avoid last minute manoeuvres
- Keep a safe distance from the Cb cells without unexpected encounters of turbulence, lightning or hail
- Save fuel through optimized route planning through thunderstorm lines



WxFUSION PRODUCTS
ON TIME – PRECISE – CONSISTENT

info@wxfusion.com
www.wxfusion.com